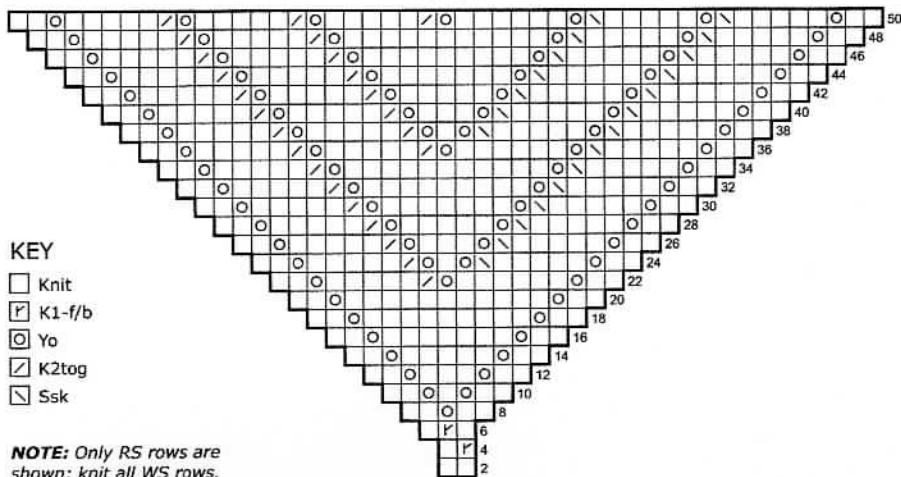


81111

SHAWL CHART #4



KEY

- Knit
- K1-f/b
- Yo
- K2tog
- Ssk

NOTE: Only RS rows are shown; knit all WS rows.

ABBREVIATIONS

- beg** begin(ning)
- dec** decrease
- inc** increase
- k** knit
- p** purl
- pat** pattern
- Pm (pm)** place marker
- rem** remain(ing)
- rep** repeat(ed)(ing)
- rnd(s)** round(s)
- RS** right side
- sc** single crochet
- sm** slip marker
- st(s)** stitch(es)
- tbl** through back loop
- tog** together
- WS** wrong side
- yo** yarn over



#5 SWAN LAKE WIMPLE

designed by Annie Modesitt

INTERMEDIATE



SIZE

One size

KNITTED MEASUREMENTS

Circumference 27"/68.5 cm

Length 27"/68.5 cm

MATERIALS

- 2 balls Filatura Di Crosa **SUPERIOR** 70% cashmere, 30% schappe silk (0.88oz/25g; 330yds/300m) in color #02 cream
 - One size 7 (4.5mm) circular needle, 24"/60cm long
- OR SIZE TO OBTAIN GAUGE**
- Stitch marker
 - Yarn needle

GAUGE

16 sts and 28 rnds = 4"/10 cm in Lace Pattern

TAKE TIME TO CHECK GAUGE

ABBREVIATION

S2kP: Double centered dec – Slip 2 sts together KNITWISE to right-hand needle, k1, pass 2 slipped sts over (p2sso).

PATTERN STITCHES

Garter stitch (Garter st)

Stockinette stitch (St st)

Lace Pattern (multiple of 12 sts)

Rnd 1 * K3, S2kP, k4, yo, k1, yo, k1: rep from * around.

Rnds 2, 4 and 6 Knit.

Rnd 3 * K2, S2kP, k3, yo, k3, yo, k1: rep from * around.

Rnd 5 * K1, S2kP, k2, yo, k5, yo, k1: rep from * around.

Rnd 7 * S2kP, k2, yo, k5, yo, k2: rep from * around.

Rnds 8-11 Knit.

Rnd 12 * Yo, k1, yo, k4, S2kP, k4: rep from * around.

Rnds 13, 15 and 17 Knit.

Rnd 14 * Yo, k3, yo, k3, S2kP, k3: rep from * around.

Rnd 16 * Yo, k5, yo, k2, S2kP, k2: rep from * around.

Rnd 18 * K1, yo, k5, yo, k2, S2kP, k1: rep from * around.

Rnds 19-22 Knit.

Repeat Rnds 1-22 for Lace Pattern.

WIMPLE

Cast on 108 sts. Place marker and join for working in the round, being careful not to twist.

Begin Garter st; work 4 rounds.

Change to St st; work 8 rounds.

Change to Lace pat and work Rnds 1-22 8 times.

Change to St st; work 8 rounds.

Change to Garter st; work 4 rounds.

Bind off all sts loosely.

FINISHING

Block piece to measurements. Weave in ends.

SPECIAL TERMS

K1-f/b: Knit 1 front and back (inc) – Knit next st, then knit it tbl.

K2tog: Knit 2 together (dec) – Knit 2 sts tog through the front loops.

P2tog: Purl 2 together (dec) – Purl 2 sts tog through the front loops.

[For multiple decs, work as above using the number of sts specified.]

Ssk [or ssp]: Slip, slip, knit [or purl] (dec) – Slip 2 sts, one at a time KNITWISE to right-hand needle, return the sts to left-hand needle in the turned position and knit [or purl] them together through the back loops.

SPECIAL TECHNIQUES

SINGLE CROCHET (sc): Insert hook into stitch or chain, hook yarn, pull through loop on hook; repeat across row, from right to left.

PATTERN STITCHES

Garter stitch (Garter st)

[Rows] – Knit all sts every row.

[Rnds] – Knit 1 rnd, purl 1 rnd.

Stockinette stitch (St st)

[Rows] – Knit on RS, purl on WS.

[Rnds] – Knit every round.

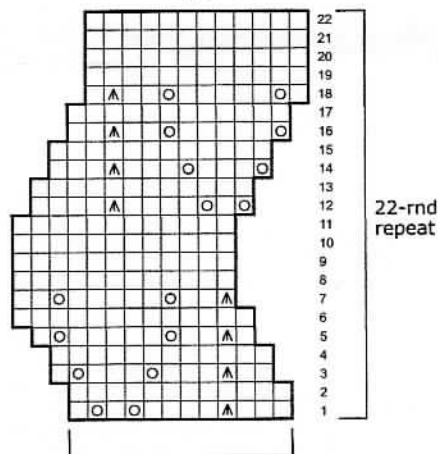
K2, p2 rib (multiple of 4 sts + 2)

Row 1: K2, * p2, k2: rep from * across.

Row 2: P2, * k2, p2: rep from * across.

Rep Rows 1 and 2 for k2, p2 rib.

LACE PATTERN #5



12-st repeat

KEY

- Knit
- Yo
- S2kP

Creative Director: Adina Klein
 Graphic Designer: Janeen Bellafiore
 Photographer: Adrian Buckmaster
 Hair/Makeup: Irene Delgado
 Model: Claire Fricke (Click)
 Technical Editor: Elizabeth Sullivan
 All Dresses provided by Jill Anderson, NY
 (www.jillanderson.com)

© 2009 Tahki Stacy Charles, Inc.
 All rights reserved